

"I am the vine, you are the branches; abide in me and you will bear much fruit." John 15:5



Vine & Branches

News from St. Elizabeth's Episcopal Church, 720 N. King Street, Honolulu, HI 96817



September
2005

The Right Reverend
Richard S. O. Chang,
Bishop

The Reverend
Jodene S. Hawkins,
Priest-in-Charge

The Reverend Dr.
Gerald G Gifford
Rector Emeritus

The Reverend
Peter S. M. Fan,
Chinese Language
Priest

Mrs. Susan Duprey
Choir Director

Mrs. Marie Wang
Organist

Katherine Crosier
Parish Secretary,
Graphic Design

Stuart Ching
Senior Warden

Harold Ware
Junior Warden

Caren-Jean Esaki
Secretary

Lowell Ing, Treasurer

Sue Yap, Contributor

Founders' Day 2005

*Honoring our History,
Committing to our
Future*

Aloha Beloved in
Christ,

"There is a time for every season under heaven," the Bible assures us. Founders' Day on October 16th begins a special time of celebration at St. Elizabeth's. Founders' Day is St. Elizabeth's way of *Honoring our History and Committing to Our Future*. Long ago the neighborhood of Palama was our ancestors' home. Children played under the cool shade of the Banyan tree. Their small hands rang church bells on Sunday mornings calling families to prayer and life together as a family of faith. Families brought their children to Sunday School and for the sacrament of Holy Baptism. They shared Christian fellowship and feasted together. Children were children and played the usual children's pranks, even on Sundays. Parents dedicated themselves to learning English and work skills to make a better life for their families and children, often working long and hard hours. The 'sweet hour of prayer' on Sunday morning knit all these diverse families together as one Church Family. Those ancestors' names now are written in God's eternal book of life. The children have grown up and now have children and grandchildren, and great grandchildren of their own. Many of you are those children, grandchildren, or great grandchildren.

Your life carries on the legacy of the integrity, courage and faith of your ancestors. Our church carries on the legacy of the Christian faith and the labors of love of the ancestors. Your ancestors labored to bring St. Elizabeth's to birth on this land in Palama. Your ancestors assured that St. Elizabeth's was rebuilt on this land. Those same tower bells that



called the faithful to prayer still ring out on Sunday mornings. That same outdoor cross stands as a silent sentinel marking the location of our original church. The same sanctuary lamps glow with the welcoming warmth of the light of Christ above our altar. Our original Tiffany window with St. Elizabeth, St. John and our Lord Jesus as a little child, continues to express God's benediction of love and faithfulness as well as offering an enduring witness to our benefactors, the Proctor family.

Much has changed in our world. And yet, much is the same. And should be. Sunday school's loving care for our children, the 'telling of the old, old story of Jesus and his love,' puts the little ones right in the center of our church family. Children's small, soft hands reach out for the bread of life in the Holy Eucharist and are nurtured by the body and blood of our Lord Jesus Christ every Sunday. We continue to gather for that 'sweet hour of prayer' with elders, children, and newcomers from the neighborhood.

We remember that our ancestors long ago were newcomers to our Palama neighborhood and that they, too found a spiritual and family home here at St. Elizabeth's.

Committing to Our Future is an exciting venture for our church over 100 years old. The good news is that we are moving along, not creaking along! Take a look at how beautiful our church is and is becoming. Our kitchen is almost in full time use as we share feasting and fellowship with each other. There's energy and commitment to discover and try new ways and new ministries. St. Elizabeth's has committed to opening our hearts to our neighbors, from those passing by on our streets, to the children at Princess Kai'ulani school where we provide school supplies and camp scholarships to the 52 homeless children there. We are opening our garage on Banyan Courtyard to create a Children's Center for needy children. Soon there will

continued on next page

Mother Jodene *cont.*

be volunteers nurturing the children's growing souls with ukulele lessons, Bible stories, story reading to assist with English skills, and pottery making. As our ancestors were introduced to the love of Christ through Deaconess Drant, and other deacons and all the priests that followed, so our neighbors will experience the love of Christ through worship and the many ways we are reaching out to touch our community with love and compassion and positive change.

I invite you to join us as we Honor our Past in Celebration at Founders' Day. I invite you to come, hear, and see for yourself as you join your St. Elizabeth's Church Family in our new venture into a vibrant future. Thank you for all your support over the years. I look forward to greeting each one of you personally on our Founder's Day.

Lovingly and faithfully in Christ,

Mother Jodene +



Baptisms

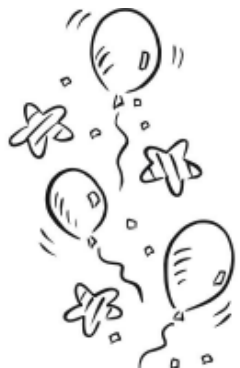
Baptized on August 21st, 2005 were Janaiya Troy-Ann Kelii Wahine Kukiaipaloka Carrillo-Melendez, born January 31, 2005 and her father, Bronson Bonila Kaleo-o-Kalani West. Mother is Carmen Belen Carrillo-Melendez. Sponsors are Elizabeth

Carrillo-Melendez and Duane Nicholas Cruz, who left for Iraq following the baptism.

Holy Baptisms to be held October 23rd at 8:15 Eucharist.

Holy Baptism is God's Sacrament of birth to new life in Jesus Christ and God's sacrament of Belonging to God and belonging to God's church. In this sacrament, God *hanai's* us into God's eternal ohana by Water and the Holy Spirit and we are "mariked as Christ's own forever."

Please call the church office or see Mother Jodene if you or a loved one desires to receive this Sacrament.



St. Elizabeth's '100 Club'

We offer our blessings, prayers and ongratulations to **Stella Ho Lau** on her 100th birthday, September 23rd. Stella will join us for church on Sept. 18th. We will have a birthday cake and "Kaubucks" coffee to celebrate. Please join us in wishing her well.



Hurricane Katrina and St. Elizabeth's Response

Dear Family of God,

I give you thanks for your generous response to those who suffer so much desperate need and overwhelming grief. Your caring offerings to Episcopal Relief and Development are sorely needed and will be well used. ERD commitment in this relief effort will be giving ongoing support and care especially for those who are the most vulnerable: women, children and the elderly. As of today, St. Elizabeth's has given over \$830 with much more to come, I know. We pray for God's hope to be rekindled for each and everyone.

There is a light in the world, a healing spirit, more powerful than any darkness we may encounter. We sometimes lose sight of this force, when there is so much suffering, too much pain. Then suddenly, the spirit will emerge through the lives of ordinary people who care and answer in extraordinary ways.

(Mother Theresa)

Mahalo,
Mother Jodene+

E-Vine and Branches



Call or email the church office if you would like to be placed on our E-Vine and Branches mailing list and receive this

newsletter via email in PDF (Portable Document Format). In full color, yet! You can download the free Acrobat Reader which reads PDF files from www.adobe.com.



720 North King Street
Honolulu, Hawaii 96817

Telephone (808) 845-2112
Email: stelizabethspalama@yahoo.com

The Rev. Jodene S. Hawkins
Priest-in-Charge

St. Elizabeth's Episcopal Church

Dear Fellow Parishioners and Friends,

Our very first FOUNDER'S DAY celebration will be held on Sunday, October 16, 2005 on the church premises at 720 North King Street. Our grand event will begin with the Holy Communion at 10 a.m. followed by a delicious, catered luncheon. You are cordially invited!

The purpose of FOUNDER'S DAY is to bring former and present parishioners and friends together to share memories and re-connect with old friends. We are especially hopeful that our many former parishioners and friends, who helped to shape St. Elizabeth's magnificent history and ministry, will attend.

It was 103 years ago, on October 19, 1902, that religious services were first held. Our present church was dedicated by Bishop Harry S. Kennedy on Palm Sunday, April 6, 1952. Total cost of construction was \$115,000 and it was the first church in the Hawaiian Islands to be equipped with central air-conditioning.

The momentum and rejuvenation of our ministry has been escalating. We even made the front page of the Episcopal Church newspaper in Hawaii, in the September issue. Be a witness to the many on-going and worthwhile programs of music, education and outreach at our church. We look forward to sharing the good news with you! Come worship and share memories together with us. We believe you will find our new beginnings exciting and inspirational.

Cost of the luncheon is \$15.00 per person. Please make your check out to St. Elizabeth's Episcopal Church. Fill out the attached form and, together with your check, bring it to church on Sunday or mail it to the above address, ATTN: Founder's Day Committee – Tickets. We would appreciate your response by September 23, 2005.

There will be parking at Palama Settlement and Likelike Elementary School. You will be assisted with parking at both locations. We regret that there will not be valet parking available.

Please share this information with others who you think may be interested in attending. We would like to reach as many former parishioners and those who, in any way, shared in the life of our church. Please have them call the Church Office (845-2112) and we will be happy to mail them a copy of this letter.

Aloha and Mahalo,

The Rev. Jodene S. Hawkins
Priest-in-Charge

Millie Goo and Larry Young
Co-chairpersons

Tickets: Patsy Ching, 955-3535



Founders' Day, October 16, 2005

Be a part of our first Founders' Day celebration earmarking 103 years of our historical past. Don't miss out on this opportunity to re-connect with former parishioners, renew friendships and to make new friends.

Keep apprised of the exciting outreach programs, activities and renewed ministry that have been flourishing under Mother Jodene Hawkins' leadership since September 3, 2004.

Here are several ways to become involved:

- #1** Sign up for a committee in back of the church where your help is needed and greatly appreciated.
- #2** Attend the gala affair on Sunday, October 16th beginning at 10:00 am for the Eucharist followed by the reception under the Big Tent on the church's parking lot.
- #3** Call the church office for an official invitation which includes information regarding parking.
- #4** Worship with us on Sundays at 8:15 am.

Co-chairpersons for Founders' Day are Millie Goo and Larry Young.

A Special Song for St. E's!

On Sunday, October 2nd, noted singer and composer Aaron Loo will direct our Ringers and Singers in a song composed especially for St. Elizabeth's: "*Sunday in Palama*." Aaron grew up in Palama; he is related to Dorothy and Richard Jung and Nella Kleinschmidt. His music represents the journey Aaron has taken from playing drums in a garage rock band in Hawaii to his landing in Los Angeles as a producer/composer. Aaron's composing and arranging style includes rock, R&B, jazz and classical.



A special rehearsal for Ringers and Singers with Aaron will be held on **Friday evening, September 30th** at 6:30 pm.

A Reception for Aaron Loo will take place in Shim Hall immediately following the October 2nd service. The Danger! Men Cooking crew will be preparing breakfast for us. We thank them for sharing their special skills and many talents.

Founders Day Reflections

As we honor our past on Founders' Day, October 16th, and reflect upon the many accomplishments of St. Elizabeth's ministry, we recall with pride a momentous event that took place on January 1, 1941. At the 44th Annual Convention of the Missionary District of Honolulu, St. Elizabeth was the first church in the history of Hawaii to gain parish status.

Our former Day School, which later became Na Lei Preschool was one of the first schools to gain Project Headstart status.

The settlement houses built on Kanoa Street served as a model for public housing in Hawaii. It was named St. Elizabeth's House in loving memory of the wife of our benefactor. Mr. William A. Procter.

The priceless Tiffany window which adorns the altar was designed by Mr. Frederick Wilson of Judson Studios in California. It is believed that the Tiffany window represents the face of the wife of Mr. Frederick Wilson. Jesus, on the left, and John the Baptist complete the picture.

The Belfry Tower or bell tower is also named in honor of Charlotte Elizabeth Procter.

The original site of our first church now houses Pacific Gateway Center, originally known as the Immigrant Center which serves 20,000 clients annually. It was renamed Shim Hall on September 14, 1980 in loving memory of the Reverend Wai On Shim who served as pastor for 23 years with his devoted wife, Esther Fo Shim for which Esther's Kitchen is named.

To recapture the history of St. Elizabeth's Church, centennial booklets are still available for \$5.00.

A video, documenting the church's history is being produced by Gabe Hoefften, hopefully in time for Founders' Day for \$25.00/copy.

Stay tuned for further developments on the project.



RagDolls2Love: Pass the Word

This is a plea for dolls. I am writing to people who have sent us dolls in the past and those of you who have supported us.

We have had a request from two places, Texas and Mississippi, for dolls for victims of Katrina. We have 700 to ship, but the need is great. We have distribution people who will receive them. It is best that you send them to us so the people there aren't overwhelmed by individual boxes arriving.

If you have dolls, please send them ASAP to Wapiti. If you can make dolls and get them to Wapiti fast, please do so.

The children who are traumatized by Katrina thank you.

We thank you, and blessings

Mary-Page Jones,
President
Rag Dolls 2 Love, Inc.
P.O. Box 292
Wapiti, WY 82450 USA
www.ragdolls2love.org



Each of you in different ways have supported this project. We have shipped 500 dolls to San Antonio with more to be shipped. We have also shipped to Mississippi and Alabama.

To each of you - thank you and blessings.

Love

Mary Page



I live in San Antonio, Texas. I received word of your program through the volunteer

network being set-up here for the refugees from hurricane Katrina.

The statement that caught my attention was: "The caseworker said it was the best gift they had to give these scared, traumatized children. They were crying and then they received their RagDoll2Love, curled up and went to sleep." Your project is apparently a great one. I just wanted to pass this on.

Cecilia Duron



Love always protects, always trusts, always hopes, always perseveres. Love never fails. 1 Corinthians 13: 7-8

Prayer for daily living

Lord of the Morning Sun, help us to live through the hours of each day so that in our dealings we will be honest, that in our work we will give our very best, and that in our success we acknowledge those who have helped us.

Bless us that we should have good health, that we will use it to the good, and that we use our tongues to speak only kind truths. If we have strong hands, help us to use them to help others, for as Christians we are asked to offer back to God what God has given us. Amen.

(Written by Kalfred Yee, husband of Hazel Yee, whose life work is being a faithful Christian and being an artist and scientist in the growing of orchids to the glory of God.)



A Letter from Kathy Crosier

Dear Ringers and Singers:

Please allow me to again thank you for your glorious participation in Bishop Chang's visit to St. Elizabeth's on July 24th. As one visitor so

eloquently put it, "Things are really happening at St. Elizabeth's - WOW!" I also want to thank you for giving me the opportunity to take the Chancel Choir and the Handbell Choir in a slightly different direction—what is called liturgical bell ringing, with everyone ringing, everyone singing. I am really pleased that we made quite a lot of progress and were able to participate in so many parts of the service, e.g. the Kyrie, the Gloria, the Alleluia, the Sanctus, and even the exit hymn and postlude.

When I was approached last spring about taking on the handbell choir at St. Elizabeth's, it was always understood that it would be an interim position only. Some of you know that I also juggle a lot of balls in the air. In addition to being the organist at the Lutheran Church of Honolulu, and playing for daily chapel services at Iolani School, I now have fourteen organ students which I teach every week after working at St. Elizabeth's from 9:00 to 1:00 every day. Mostly, though, I know my limitations in the choral and vocal areas, and it is primarily for this reason that I have talked to Susan McCreary Duprey about the choir director position.

I've known Susie since I moved to Hawaii in 1973 and she was only three years old at the time. She is the daughter of John McCreary who was the organist-choirmaster of St. Andrew's Cathedral for thirty-five years, as well as Iolani School. She has indeed followed in his footsteps, and is Director of Choral Activities at Hawaii Pacific University. While she was the choir director at First Presbyterian Church, she also conducted

the handbell choir. I worked with Susie last fall as her HPU accompanist and was really impressed with her enthusiastic ability to teach people of all ethnic and musical backgrounds to sing. She received a Master's Degree in choral conducting from my alma mater, Westminster Choir College. I know that Susan can definitely move the St. Elizabeth's choir and bell program forward.

Marie Wang will continue as organist. However, since Marie cannot attend rehearsals on Mondays, we need to change the rehearsal night to Wednesdays following Mission Possible, at least from September to December. The first rehearsal will be Wednesday, Sept. 7 from 7:00 to 8:30 pm. A special rehearsal will be held on Friday, Sept. 30th at 6:30 pm with guest Aaron Loo, who has written a special song for St. Elizabeth's. Aaron grew up in Palama; he is related to Dorothy and Richard Jung and Nella Kleinschmidt. His music represents the journey Aaron has taken from playing drums in a garage rock band in Hawaii to his landing in Los Angeles as a producer/composer.

I thank you for all your support and know that you will do the same for Susan and Marie.

Katherine Crosier

Interim
Music Director



A priest was a late for a meeting and parked in a no parking zone because of not

finding a meter. Under the windshield the priest put a note that read: "I have circled the block 10 times. If I don't park here, I will miss my appointment. Forgive us our trespasses."

When the priest returned, there was a ticket on the windshield. Attached was this note: "I've circled this block for 10 years. If I don't give you a ticket I'll lose my job. Lead us not into temptation"

Sunday School News...

Hooray for Sunday School! Sunday School begins on September 11, 2005. Welcome to our students! Please bring your registration forms with you on the first day of Sunday School. Registration forms can be picked up on the reception table in the church.

Bring a friend, make new friends, meet old friends. This school year the Sunday school will continue to use the worksheets that correlate with the gospel readings and also integrate bible stories from the old testament with flannel boards, videos and storybook reading.

The staff continues to include Lisa Anne Mitsuka Chan, Jamie Chock and Sue Yap. We are happy to have Arleen Young join us for assistance in teaching and sharing her time and talents on special sundays and would really appreciate any and all who would also like to share some time with the students.



Postcard from Iraq

Thank you so much for the care package. I've been very busy lately, so I'm unable to get mail right away. I'm looking forward to going back to St. Elizabeth's with my family when I get back to Hawaii. Please keep continuing to pray for us. Mahalo.



Kalvin Thiravong

(husband of Joan Kealoha's granddaughter)



Meet Susan Duprey

St. Elizabeth's new choir director, Susan M. Duprey was born and raised in Honolulu and graduated from 'Iolani. While at 'Iolani, she sang under her father, local organist and composer, John McCreary. She attended Gettysburg College in Pennsylvania where she majored in Spanish. Her undergraduate studies took her to Spain and

Mexico. While in Mexico, she studied voice under Tenor Flavio Becerra. Her musical studies continued at Westminster Choir College of Rider University in Princeton, NJ, where she earned a Master of Music, *with distinction*.

While at Westminster, Ms. Duprey sang, recorded, and toured with the renowned 40-voice Westminster Choir. She has sung in leading orchestras; including the New York Philharmonic, The Philadelphia Orchestra, and the New Jersey Symphony.

Ms. Duprey has conducted members of the Honolulu Symphony Orchestra and has prepared choruses for such noted conductors as Joseph Flummerfelt, John Rutter and Timothy Sharp. She has led performances of Mozart's *Requiem*, Vivaldi's *Gloria*, Bruckner's *Te Deum*, and excerpts from Handel's *Messiah*. She performed several years with *Kawaiolaonapukanileo*, an ensemble created to perpetuate Hawaiian choral music.

She is founder of the International Chorale and Vocal Ensemble at Hawai'i Pacific University.

Field Trip to Honor Dale Sato

On Saturday, October 22nd at 4:00 pm, there will be a field trip to the Urban Garden Center in Pearl City to honor Dale Sato, who will be retiring. Dale is well-known to many St. Elizabeth's parishioners and has been very generous with his time and talents in gardening and landscaping. The Urban Garden Center is located on 2nd Avenue with the entrance by Home Depot A surprise retirement dinner will be held for Dale after the tour. If you are interested in attending, please sign up on the clipboard in the back of the church or phone the church office.

Scholarship Award

The Scholarship Committee has awarded Ms. Kressel Horio scholarship monies for the 2005-2006 academic year. Kressel will be entering the nursing program at Kauai Community College in the fall.

Daniel Ho and George Kahumoku

Saturday,
November 26th,
Thanksgiving
Weekend, 3 pm.

Daniel Ho returns for
a super encore at St.

Elizabeth's joining George Kahumoku for a concert in our church of Hawaiian hymns and slack key guitar classics and new releases. Both Daniel and George are Na Hoku Hanohano award winners and wonderful entertainers.

Seating will be limited to our church sanctuary. Each ticket purchaser will receive a free Daniel Ho or George Kahumoku CD with their ticket purchase of \$15. Rare handmade ukuleles will be on display from Koaloha Ukuleles, a Palama neighbor.

We will have cookies and sweet breads for sale to benefit our Garage Children's Outreach Center off Banyan Courtyard.

How perfect is this for a day of Thanksgiving for God's blessings, lifting our spirits and getting some early Christmas joy and homebaked goodies.



More Church Chuckles

A Sunday school teacher began the lesson by asking, "Boys and girls, what do we know about God?"

One of the kindergarten children raised her hand. "I know, God is an artist!"

"Really? How do you know," asked the teacher.

"I know it from the Lord's prayer— Our Father who does art in heaven..."

**Vestry Meeting
September 18th**

From Princess Ka'iulani School

Dear Reverend Hawkins:

On behalf of the Department of Education, I would like to thank you for your gift of \$500.00 to Ka'iulani School.

This gift will be used to support the educational needs of the students at Ka'iulani School.

We are grateful for your generosity and support of public education.

Very truly yours,

Patricia Hamamoto

Superintendent
State of Hawaii
Department of Education



September Birthdays

Rosemary Lau	9/2
Alyssa Rodrigues	9/17
Bill Eng	9/20
Francis Nakata	9/20
Stuart Ching	9/21
Wai Wah Yee	9/21
Stella Ho Lau	9/23
Samuel Lum	9/23
Evonne Mitsuka	9/27
Polly Gifford	9/29

Can you help?

There are folks who live in the Salt Lake area and need a ride to church. Would you be willing to offer a ride to someone once a month? Please call Kathy in the church office, 845-2112 so that we can set up a rotating schedule.



Average Church Attendance August 2005

8:15 am service	93
Chinese ministry	6



St. Elizabeth's Episcopal Church
720 N. King Street
Honolulu, HI 96817

A House of Prayer for all People

Non-Profit Org.
U. S. Postage
PAID
Honolulu, HI
Permit No. 418

Return Service Requested